



SOTSIAALMINISTEERIUM

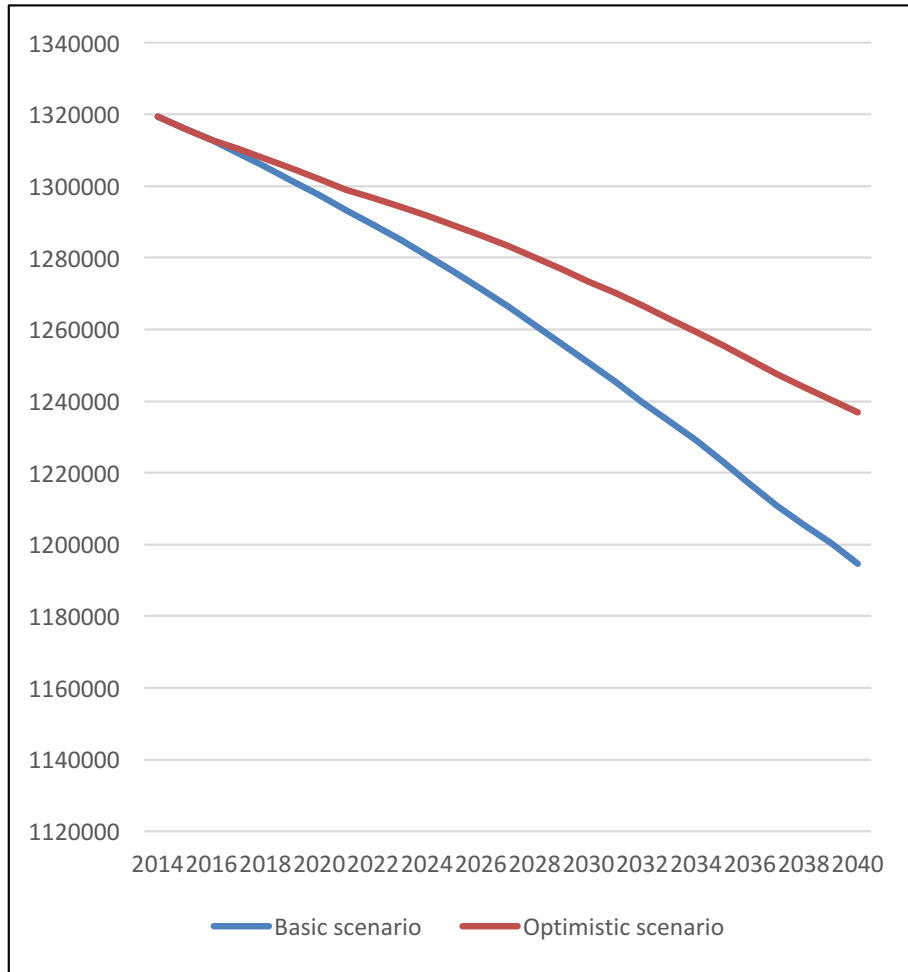
Creating innovative ecosystem for the social welfare - Estonian case

Rait Kuuse
2018

Presentation

- Social policy –main characteristics
- Challenges and opportunities
- Empowering innovation

Population projection



Based on 2012 population

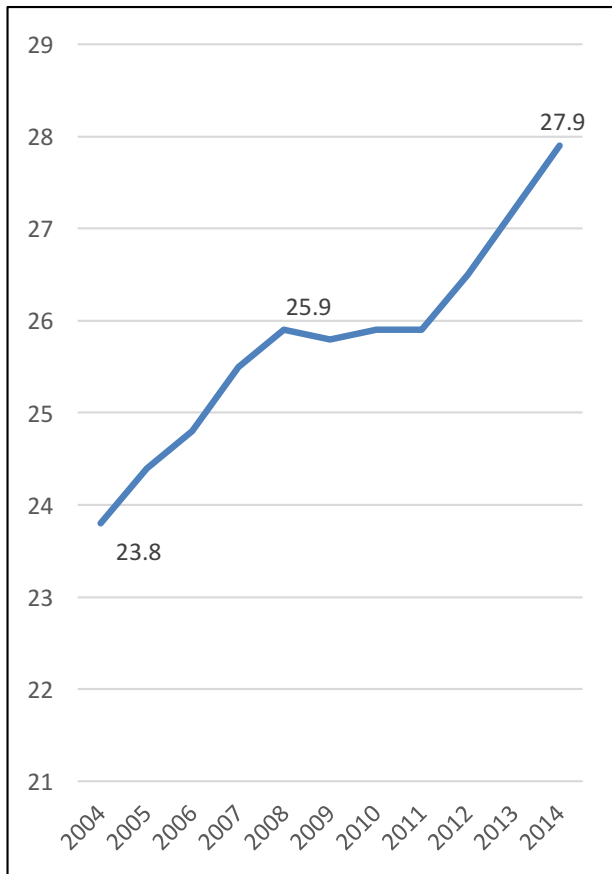
Total fertility rate increases to 1,8 by 2040

Mortality decreases

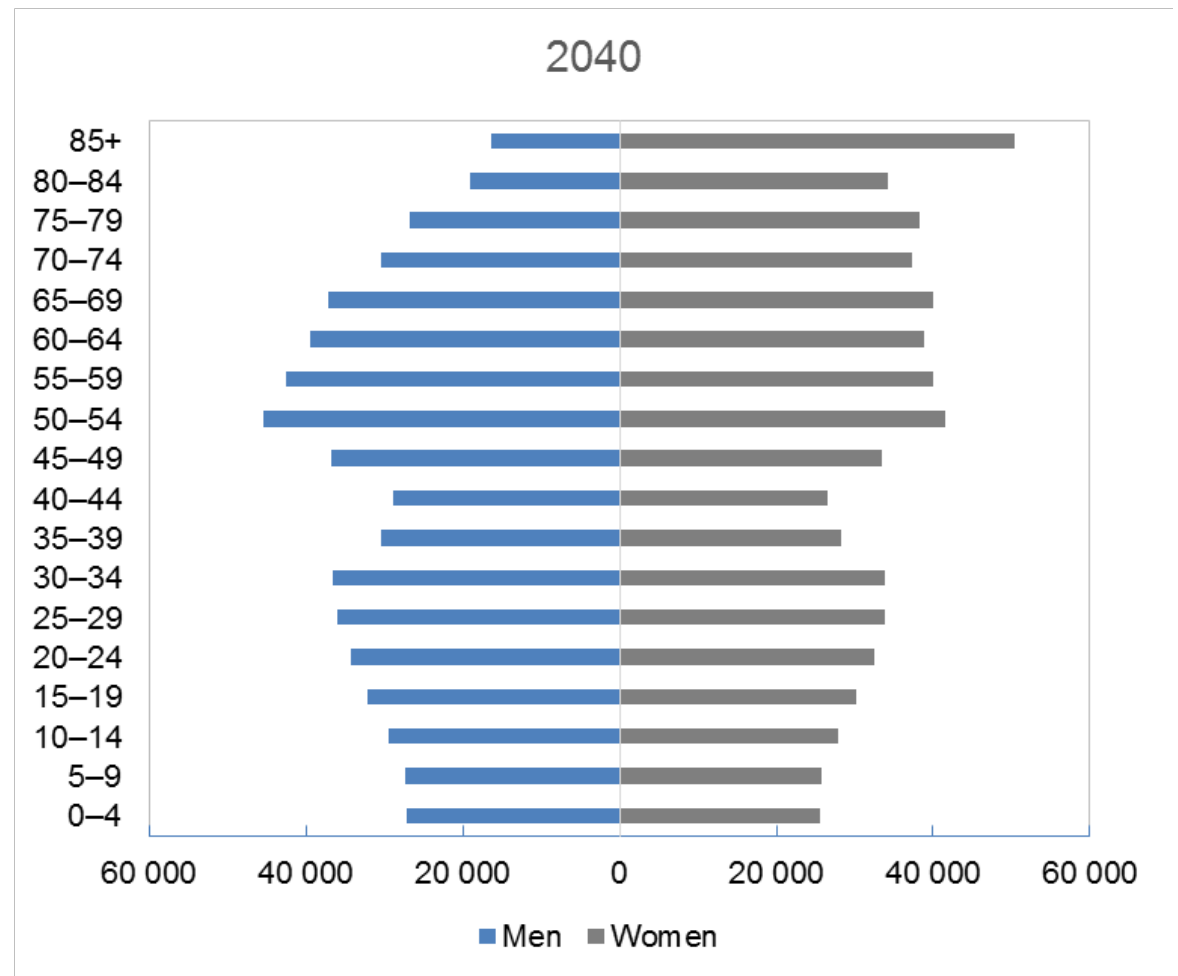
Life expectancy increases to 83,7 for women and 78,2 for men by 2040.

Net migration rate continues its current trend (basic scenario) or increases to 0 from 2021-2040 (optimistic scenario).

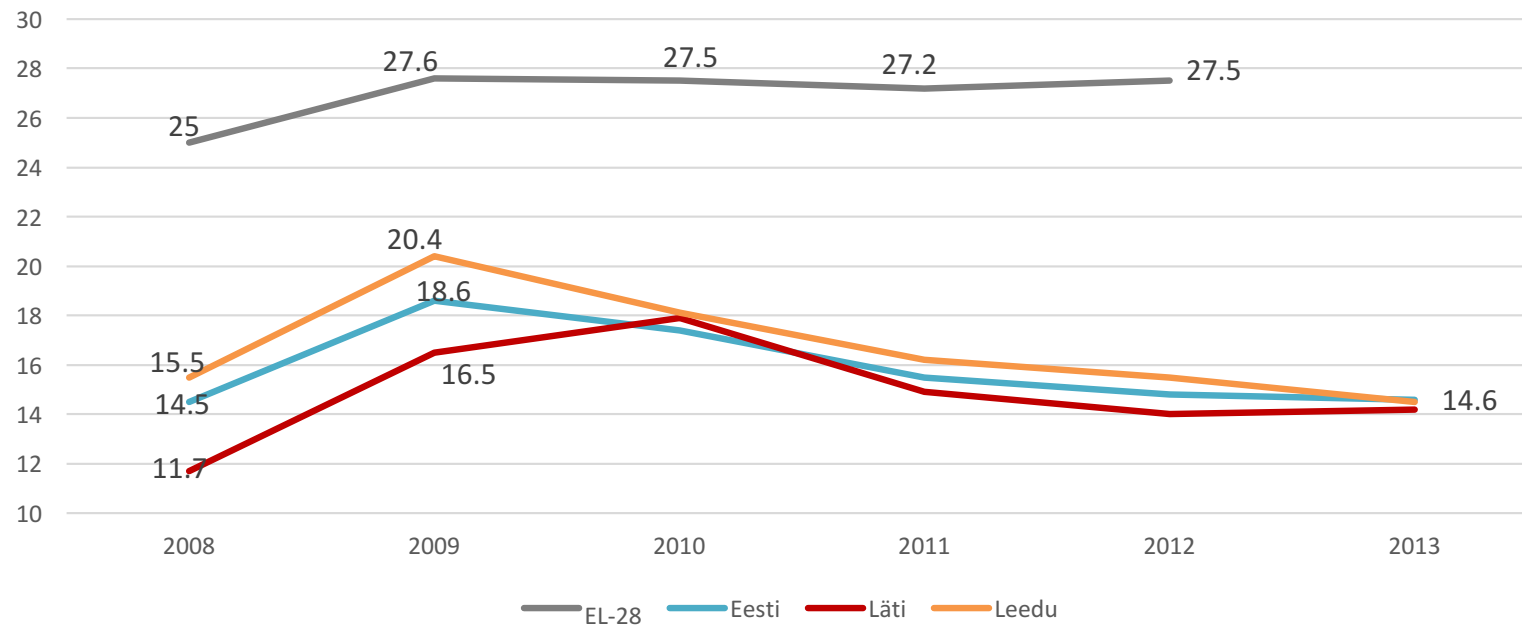
Old-age dependency ratio



Number of people aged 65+
for 100 work-aged (15-64)
people

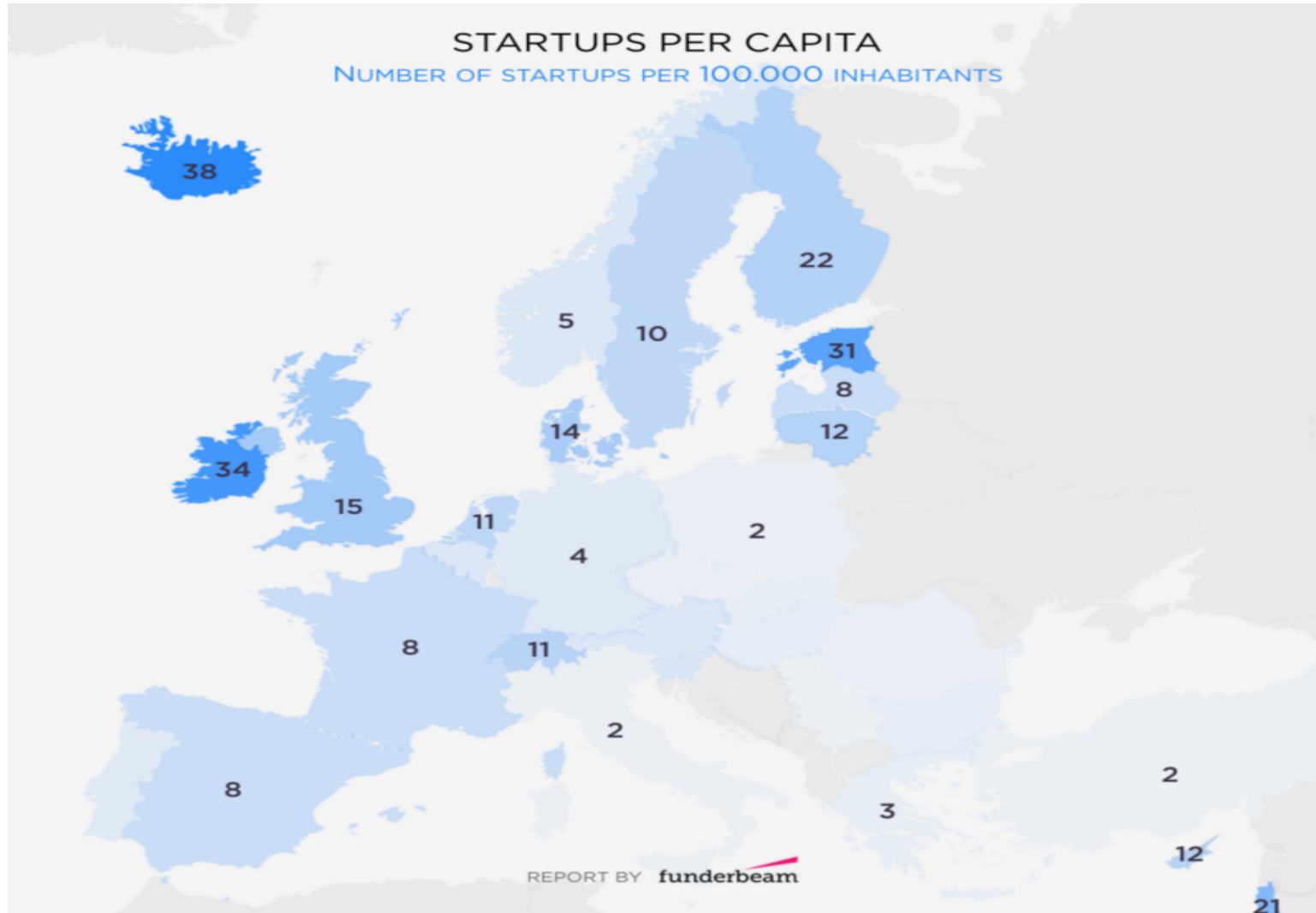


Expenditure on social protection (% of GDP)

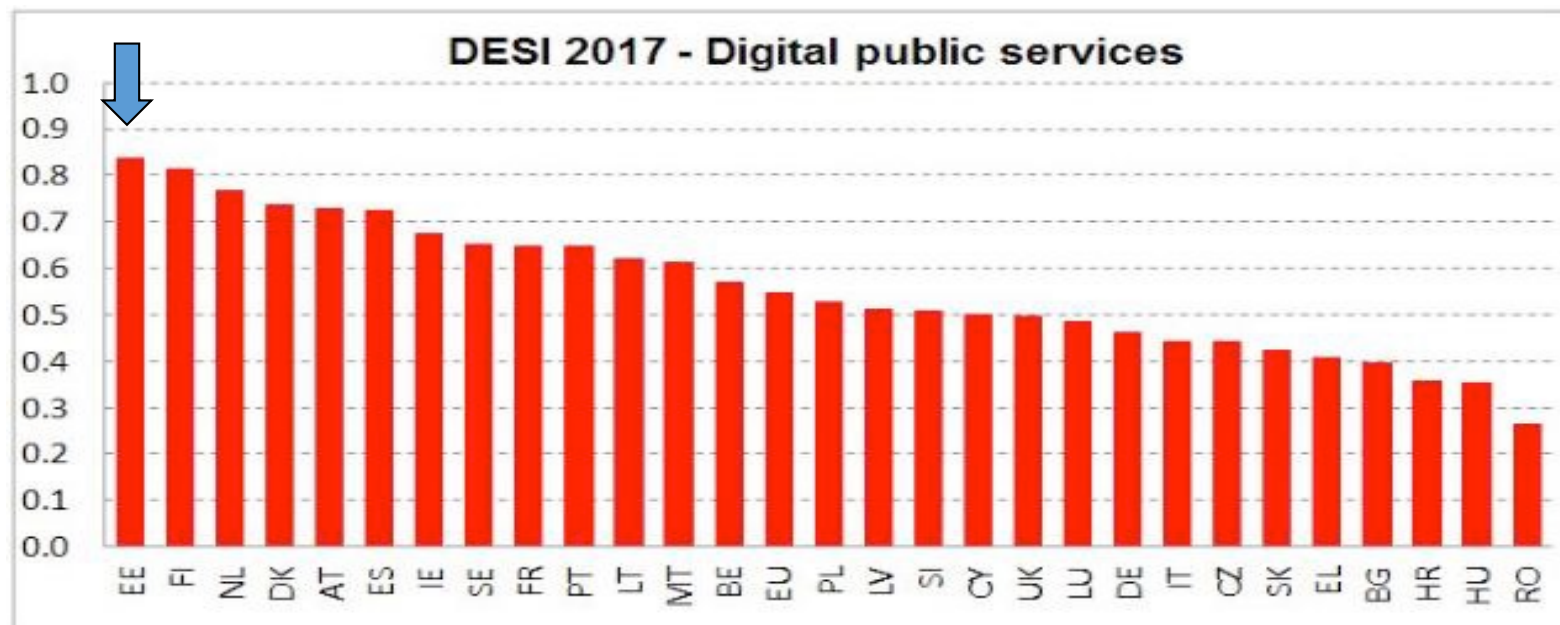
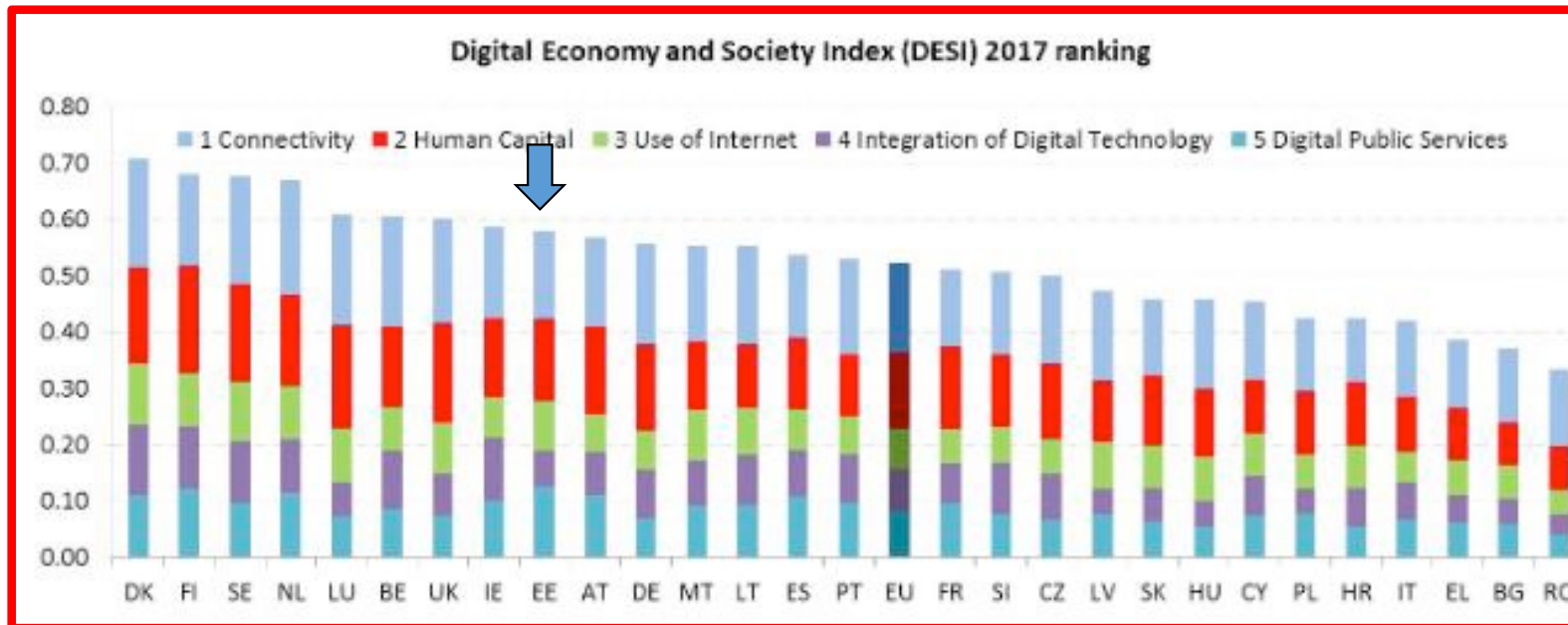


Source: Eurostat

Estonia is third in Europe regarding the highest number of startups per capita



Estonia ranks well in Digital Economy and Society Index (DESI) 2017



The directions of social welfare

Best social protection is employment...

Benefits and services have to be combined

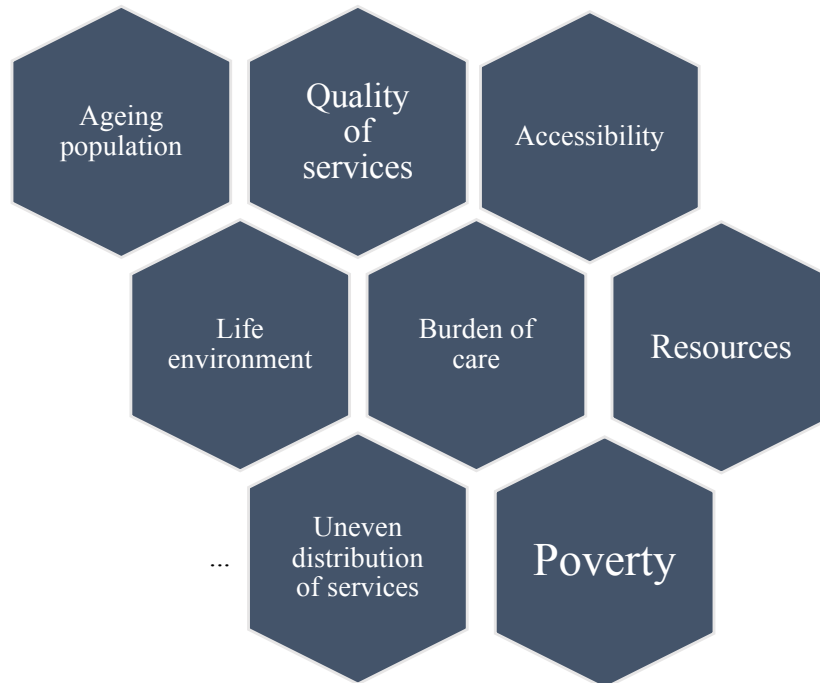
Deinstitutionalisation

Accessibility and availability of support and services

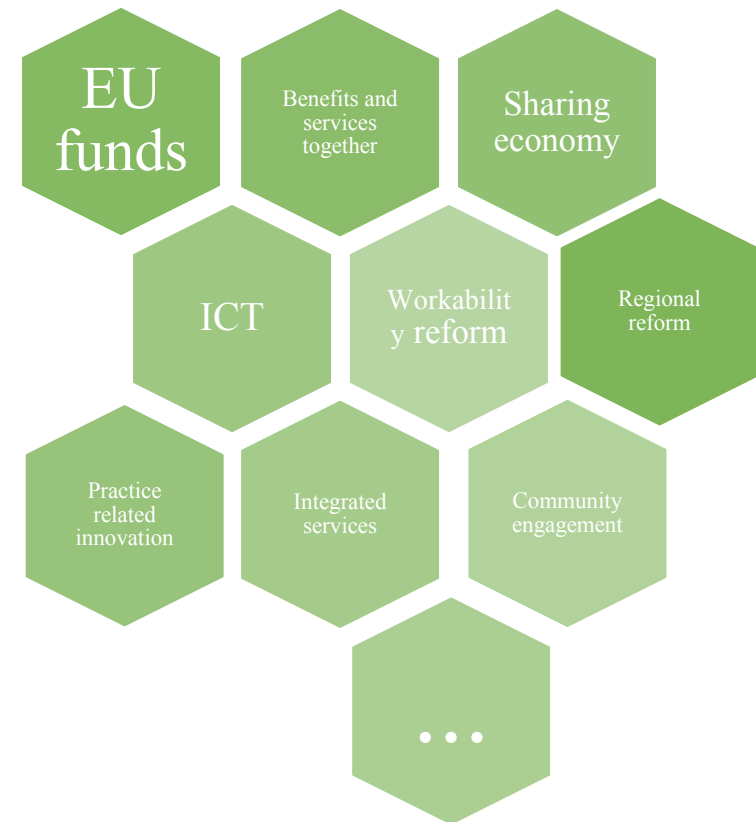
Accessibility in general

The directions of social welfare

Challenges



Opportunities



State policy towards innovative ecosystem



Idea

Idea testing

Prototype

Business

Some examples so far...

- **Helpific** - <https://helpific.com/en/>
- **Caremate** - <https://www.caremate.ee/>
- **Sentab** - <https://www.sentab.com/>
- **TempID** - <http://tempid.ee/>
- + State initiated pilot projects ...

Challenges

- ✓ Systems set-up (standards, budgets etc)
- ✓ Capacity of stakeholders
- ✓ Commitment across silos
- ✓ Mind-set
- ✓ Funding



SOTSIAALMINISTEERIUM

Thank you!

Rait Kuuse

rait.kuuse@sm.ee